



City of Kerrville
701 Main Street
Kerrville, Texas 78028
830.258.1116 (O)
830.792.3850 (F)

PRESS RELEASE

FOR IMMEDIATE RELEASE

Contact: Stuart Cunyus, Public Information Officer
(830) 258-1116

stuart.cunyus@kerrvilletx.gov

City to participate in informational TCEQ meeting tonight regarding West Texas Aggregate, LLC application

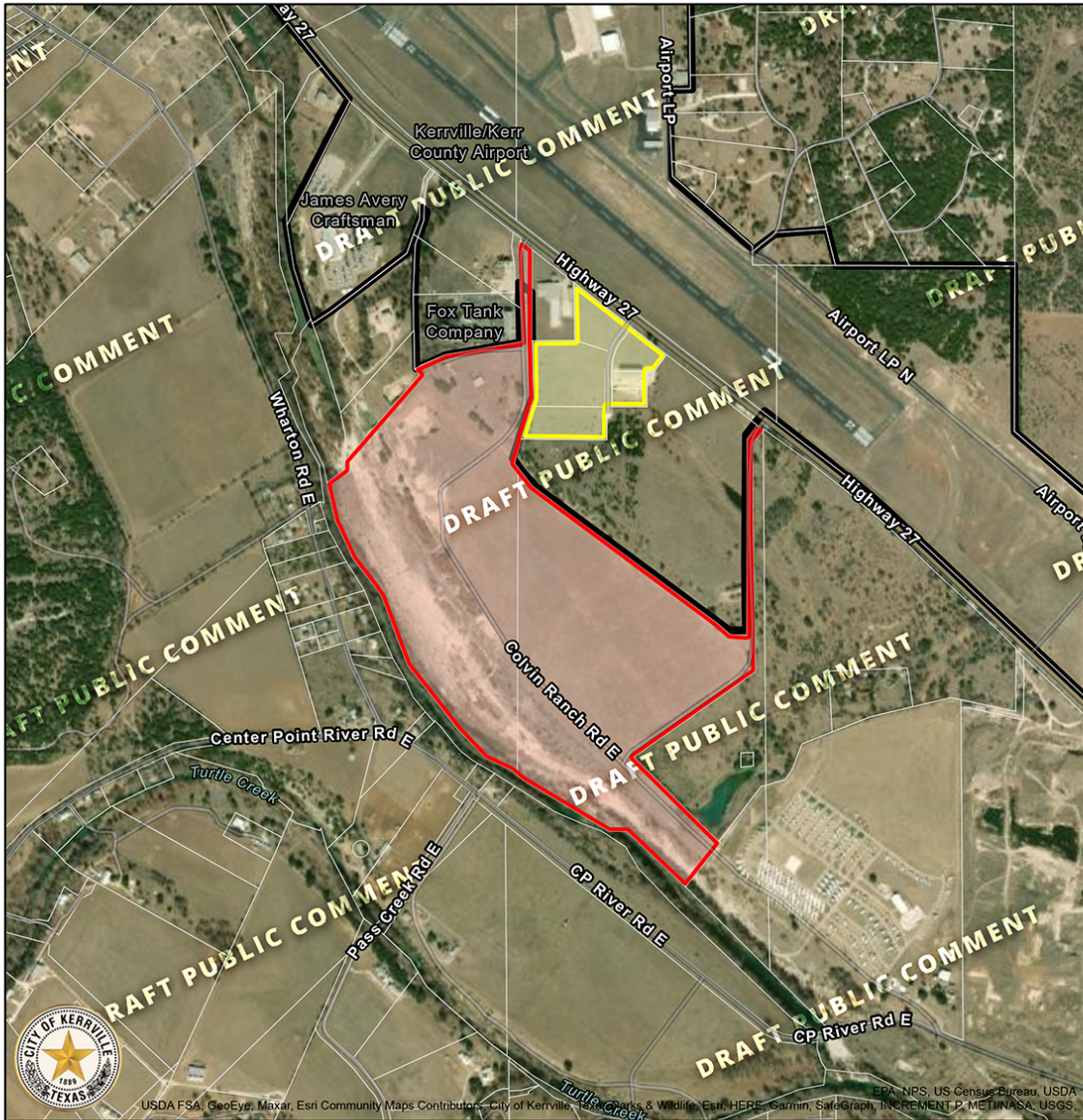
Kerrville (April 6, 2021) – The City of Kerrville will participate in an informational meeting to be held tonight by the Texas Commission on Environmental Quality (TCEQ). The meeting concerns an application filed with TCEQ by West Texas Aggregate, LLC (WTA). WTA has applied to the TCEQ for an Air Quality Standard Permit (Registration Number 163301), which if granted, would authorize construction of a permanent rock and concrete crusher on property located between the Guadalupe River and the Kerrville-Kerr County Airport.

Prior to the meeting, the city, through its attorney, filed comments with TCEQ related to the proposed registration. Based upon concerns previously raised by the city along with specific comments with respect to WTA's application, the city requests that the TCEQ deny WTA's application. In the alternative, the city requests that TCEQ refer the application to a contested case hearing so that its concerns can be properly vetted.

Tonight's hearing starts at 7 p.m. and will be held virtually. Anyone wishing to view the meeting or participate in some way may access the meeting via webcast by following this link: <https://www.gotomeeting.com/webinar/join-webinar> and entering Webinar ID 973-000-523.

The Kerrville City Council adopted a resolution on Jan. 12, 2021 expressing its collective concerns about WTA's proposed use and operations. Council remains concerned about the potential nuisances stemming from this proposed use, a use that council believes is incompatible with surrounding uses. The city is concerned about the proposed location of this permanent rock and concrete crusher operation (quarry) for reasons that include its incompatibility with surrounding uses, such as the airport, industry, and residential areas, and its impact on water quality due to the adjacency of the site to the Guadalupe River. Council is concerned that the TCEQ's approval of this permit may result in significant negative impacts to: the health, safety, and welfare of its citizens; water quality and availability; the watershed and floodplain; air quality; traffic flow; roadway safety; wildlife habitat; and property values within the city and its extraterritorial jurisdiction.

City Council is aware that other entities and businesses have submitted written comments and concerns to the TCEQ. Such entities include the Joint Airport Board and the Kerrville Chamber of Commerce, both of which have expressed their concerns in writing to the TCEQ. A number of area businesses have submitted comments as well, as this is an area that has undergone and continues to experience significant development over the past few years.

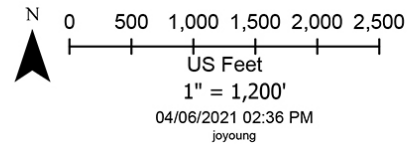


- West Texas Aggregate Property *
- Airport Commerce Park Phase 1 Subdivision *
- KCAD Tax Parcel
- Kerrville City Limit

* Boundary derived from KCAD Tax Parcels

West TX Aggregate General Location Map

DRAFT PUBLIC COMMENT



04/06/2021 02:36 PM
joyoung

This product is for informational purposes and may not have been prepared for or be suitable for legal, engineering, or surveying purposes. It does not represent an on-the-ground survey and represents only approximate relative locations.